

# START GUIDE 3D MOTION PLATE



Force Fac  
1.3

Max Torq  
108 N

Max T. Tir  
-165 r

# CONTENTS

Introduction.....	4
<b>Part 1: Studio installation</b>	
Flat and level floor.....	7
Feet on the floor.....	8
Connect the 3D Motion Plate.....	9
<b>Part 2: Install on computer</b>	
Install drivers.....	10
<b>Part 3: In software</b>	
Hardware settings.....	12
Verify the data.....	14
Troubleshooting.....	15
Checklist.....	16
Support.....	17

# INTRODUCTION



The patented Swing Catalyst 3D Motion Plate is a combination of a sophisticated force plate and pressure plate technology. Please refer to the **3D Motion Plate data guide** for more detailed information about the technology and the data measurements.

This guide will get you started with the installation of the 3D Motion Plate.

For further assistance please visit:

**[www.swingcatalyst.com/help](http://www.swingcatalyst.com/help)**

- or contact us via:

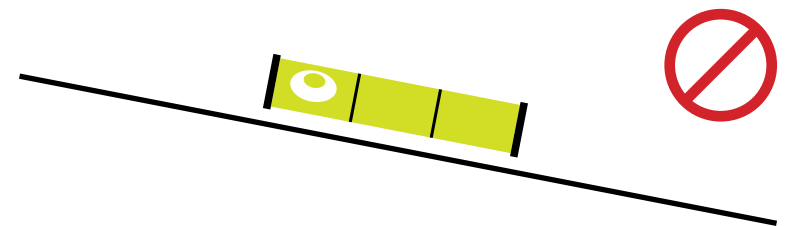
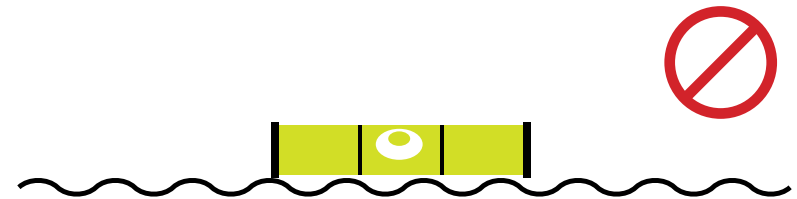
**[support@swingcatalyst.com](mailto:support@swingcatalyst.com)**

# STUDIO INSTALLATION



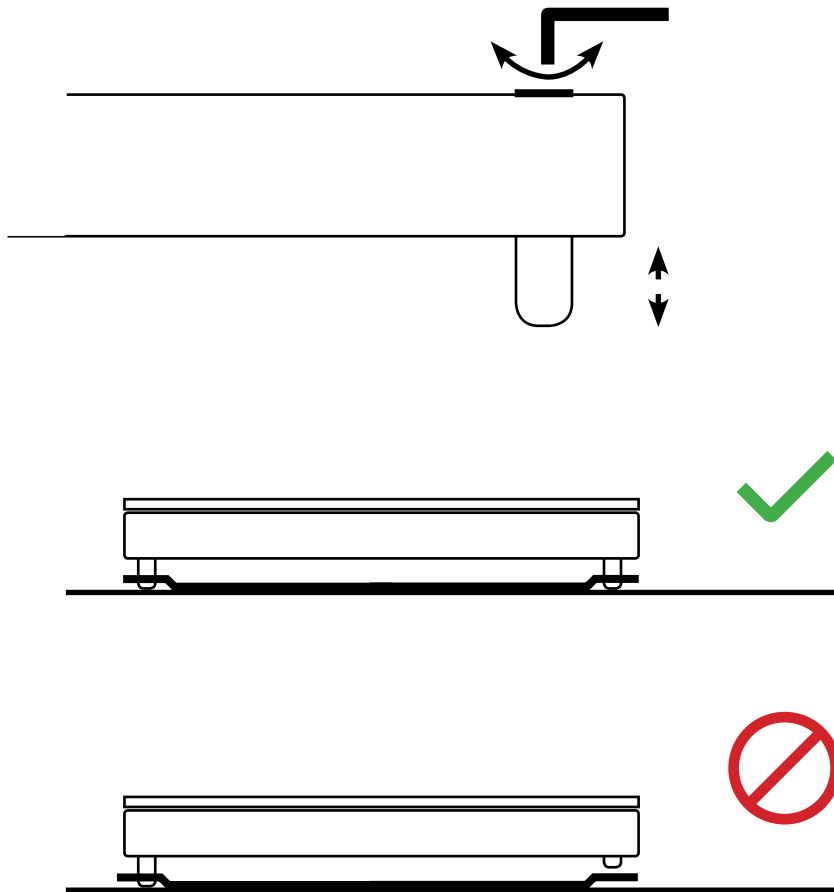
# FLAT AND LEVEL FLOOR

Place the 3D Motion Plate on a flat and level floor to ensure accurate data readings.

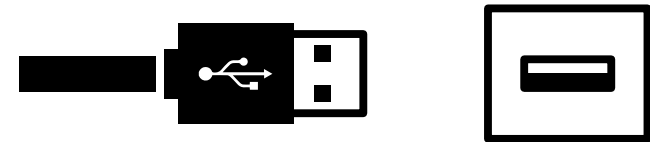


## FEET ON THE FLOOR


**Important!** To ensure accurate data readings the 3D Motion Plate must be level and have all 4 feet in contact with the floor. Make sure the plate is level before mounting the Balance Plate. It's important to account for the height of the Balance Plate when adjusting the Force Plate to make the install flush with the turf.



## CONNECT THE 3D MOTION PLATE

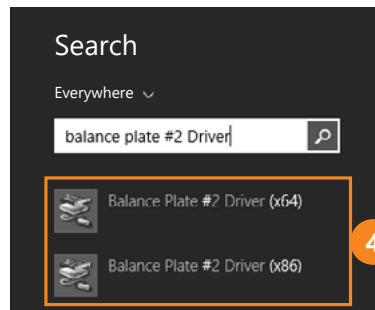


- 1 Connect one of the provided USB cables to the side of the pressure plate.
- 2 Connect the second USB cable underneath the force plate.
- 3 Connect both cables to your PC. Please use the provided extension cables if necessary.

 All electronics connected to the 3D Motion Plate must have ground. The power grid should have adequate grounding. We recommend using surge protectors to prevent damage to your electronics.

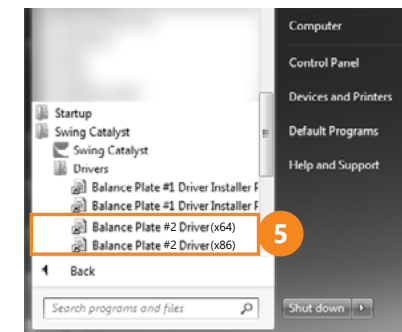
# INSTALL DRIVERS

- 1 Download the Swing Catalyst software. If you haven't received the download instructions via email already please go to [www.swingcatalyst.com/downloads](http://www.swingcatalyst.com/downloads)
- 2 Install the Swing Catalyst software, and copy/paste your license key when prompted. You should have received your license key via email. If not, please contact [support@swingcatalyst.com](mailto:support@swingcatalyst.com)
- 3 Install both the drivers for the Balance Plate and the 3D Motion Plate. First locate the Balance Plate drivers on your hard drive and follow the install instructions. Balance Plate Version 2 (64x32) drivers may also be downloaded from [www.swingcatalyst.com/drivers](http://www.swingcatalyst.com/drivers)



- 4 **Balance Plate drivers on Windows 8:**  
Press the Windows button  
Search for Balance Plate #2 Driver

For 64-bit Windows, run "Balance Plate #2 Driver (x64)"  
For 32-bit Windows, run "Balance Plate #2 Driver (x86)"



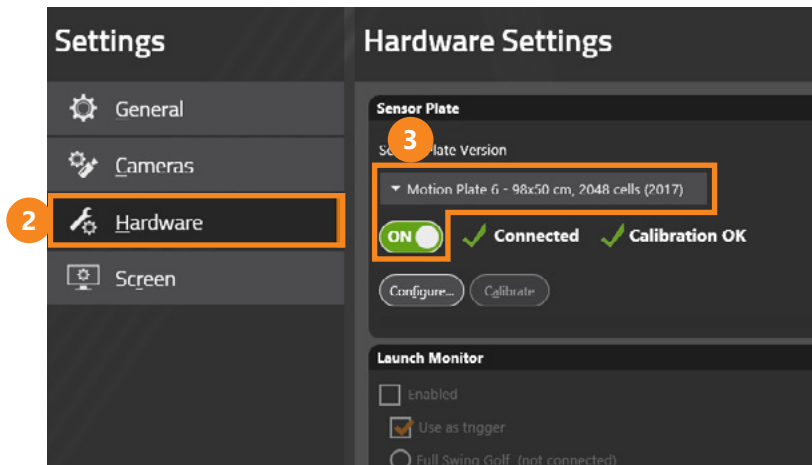
- 5 **Balance Plate drivers on Windows 7:**  
Click on the Windows Start Menu -> Swing Catalyst -> Drivers folder:

For 64-bit Windows, run "Balance Plate #2 Driver (x64)"  
For 32-bit Windows, run "Balance Plate #2 Driver (x86)"

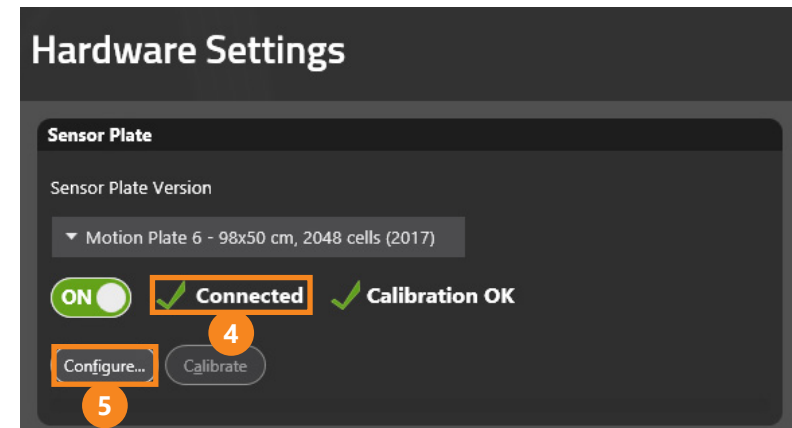
- 6 **3D Motion Plate driver:**  
Download the 3D Motion Plate version 5 driver from [www.swingcatalyst.com/drivers](http://www.swingcatalyst.com/drivers)

Run the "CDM v2.08.30 WHQL Certified.exe" file and follow the instructions. The driver works on 32-bit and 64-bit for both Windows 7 and 8.

# HARDWARE SETTINGS



- 1 Start up the Swing Catalyst software.
- 2 Go to Settings in the Main Menu and select Hardware.
- 3 Select **Motion Plate 6 - 98x50 cm, 2048 cells (2013)** in the dropdown menu and set the slider to ON.



- 4 Verify that the sensor plate is shown as connected.
- 5 Click the "Configure..." button to open the configuration dialog and select the "Stance Sensor" tab.  
  
Verify that your computer is connected to the internet, and click "Download and install" to install the calibration file. Please note that installation may take a few seconds.
- 6 When the installation is completed, click OK to close the two dialogs.

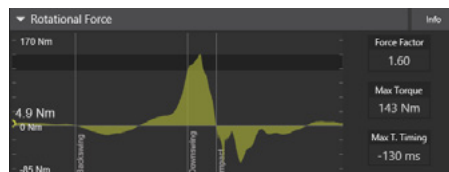
# VERIFY THE DATA

Now it is time to verify that you receive data from the 3D Motion Plate.

- 1 Select Swing Analysis in the Main Menu, set up a new golfer and click Start session. Select Capture in the Quick Start menu and step on the 3D Motion Plate.  
Important: You need to have a supported camera to be able to go in capture mode. Read more about our supported cameras on [www.swingcatalyst.com/help](http://www.swingcatalyst.com/help)



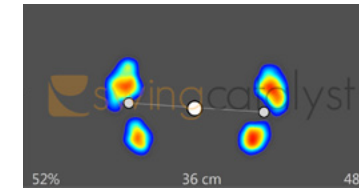
- 2 Make sure you see live pressure data in the Pressure and Stance data box. In the data box you should see your toes pointing upwards, while the white dot (CoP) should be moving to the right when you are leaning towards the right foot, and vice versa.



- 3 Click on the Manual Trigger while standing on the plate to record a video. Open the recording and make sure you see data in all 4 force data boxes::
  - Rotational Force
  - Vertical Force
  - Horizontal Force (Toe/Heel)
  - Horizontal Force (Right/Left)

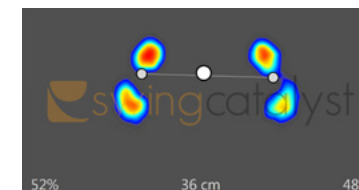
# TROUBLESHOOTING

Go to the Main Menu and select Hardware settings. Click the "Configure..." button in the Sensor Plate section to open the configuration dialog. Click the play icon and step on the plate.



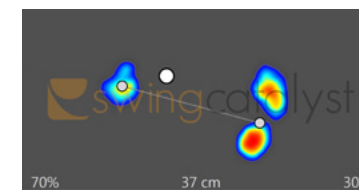
### Correct

Your toes should now be pointing upwards, while the white dot (CoP) should be moving to the right when you are leaning towards the right foot, and vice versa.



### Pressure upside down

If your toes are pointing downwards, select "Rotate stance data". Ensure that the CoP is moving in the correct direction afterwards.



### Opposite CoP

If the CoP is moving to the left when you are leaning towards your right foot, select "Rotate force data".

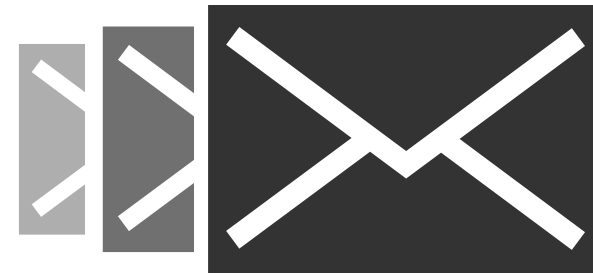
The advanced options, mirror and flip, should only be used if the rotate options doesn't resolve the issue.



## CHECKLIST

- Flat and level floor
- All 4 feet in contact with the floor
- Check electrical grounding
- Connect both USB cables to your PC
- Install the drivers
- Enable the 3D Motion Plate in the software
- Verify the data

## SUPPORT



If you have any questions, please contact support:  
**[support@swingcatalyst.com](mailto:support@swingcatalyst.com)**

Information may also be found in our Help Center:  
**[www.swingcatalyst.com/help](http://www.swingcatalyst.com/help)**

Follow Swing Catalyst to  
receive the latest updates:

