

# Mevo+ User Manual



Performance data you can trust



Performance data you can trust

"FlightScope technology is developed to offer you performance data you can trust in your pursuit of excellence."

A handwritten signature in black ink, appearing to read "H. Johnson".

Henri Johnson - Founder & CEO

# Contents

|                                 |    |                            |    |
|---------------------------------|----|----------------------------|----|
| Battery Warning                 | 1  | Setup                      | 15 |
| Performance tracking            | 2  | Setback                    | 15 |
| In the box                      | 3  | Aiming                     | 16 |
| Mevo+                           | 4  | Clearance                  | 17 |
| Battery isolation tab           | 5  | Tips                       | 18 |
| Charging                        | 6  | Indoor ball spin           | 21 |
| Battery and charging indicators | 8  | Aluminum sticker alignment | 22 |
| System indicators               | 9  | Switch off                 | 23 |
| Get the app                     | 10 | Electronic noise           | 24 |
| Connect to Mevo+                | 10 | Care                       | 27 |
| Using QR Code                   | 12 | Avoid                      | 28 |
| via Wi-Fi                       | 13 | FAQ's and support          | 29 |
| Kickstand                       | 14 | Technical specifications   | 31 |

# Battery Warning



**CAUTION:** This device contains a Li-ion battery. Do not expose to temperatures below freezing point. Do not expose to excessive heat. Avoid physical impact, puncture, crushing or dropping. If the unit is struck by a club or ball, a short circuit or other heat reaction may occur, resulting in a fire.

Do not tamper with the battery pack. Avoid physical damage or stress when removing or inserting the battery. Do not short-circuit the battery terminals. Maintain battery condition by charging and discharging regularly, at least every few months.

Use only the included charger and charging cable for best results. If the battery bulges, emits fumes, or becomes very hot, disconnect it from the charger and replace the battery. Dispose of old batteries in accordance with applicable waste battery and recycling regulations.

## Performance tracking

Visit [MyFlightScope.com](https://MyFlightScope.com) to analyze and track your data performance over time.



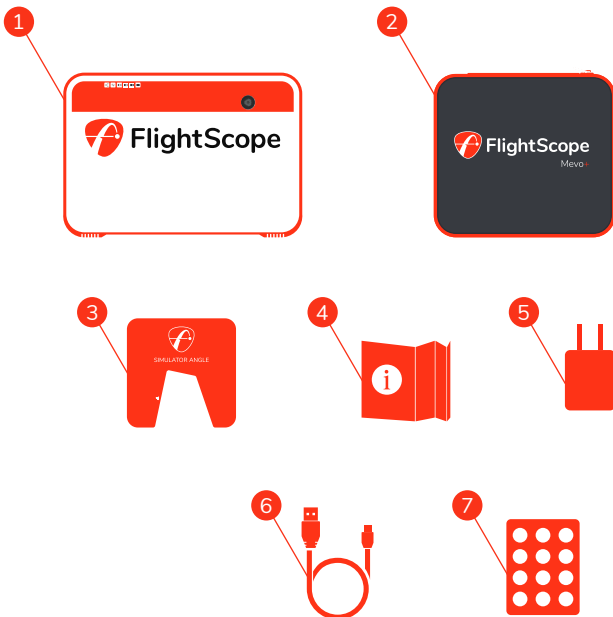
Join the [MyFlightScope.com](https://MyFlightScope.com) community and connect with fellow golfers FlightScope users. Keep track of your stats over time, spot trends or tendencies and monitor how you have improved.

Please share your results and tag us on social media.



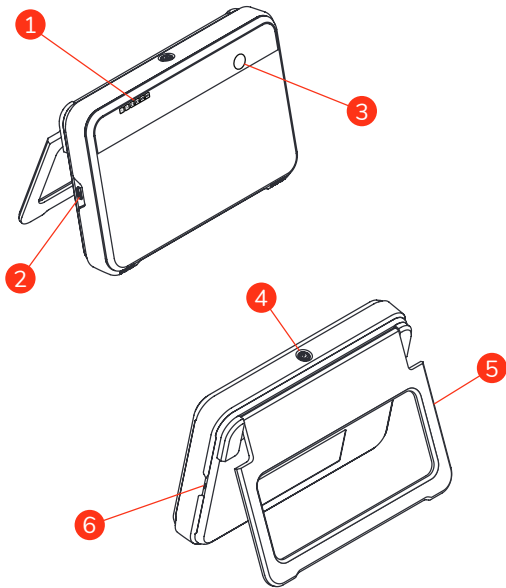
## In the box

- 1 Mevo+
- 2 Case (Not to scale)
- 3 Simulator angle
- 4 Quickstart guide
- 5 Power adapter
- 6 USB charging cable
- 7 Aluminum stickers  
(Only needed for indoor use)



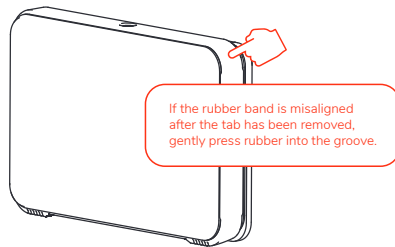
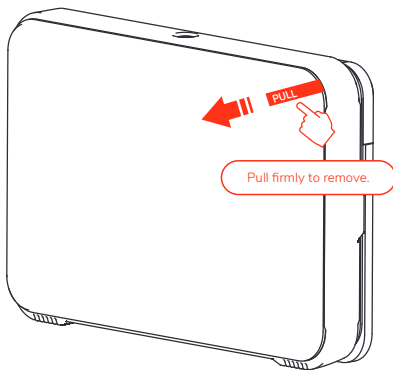
# Mevo+

- 1 Indicator lights
- 2 USB charging port
- 3 Camera
- 4 On/Off button
- 5 Kickstand
- 6 Battery and USB port (under rubber band)



## Battery isolation tab

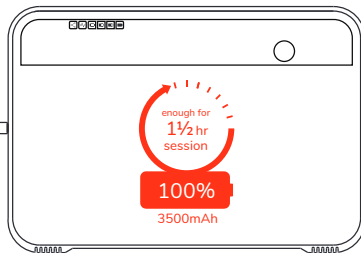
Before using, the battery isolation tab must be removed completely.





## Power and charging

3-4hrs for a full charge using  
the supplied adapter.



If the unit is unable to charge please contact  
support at [support@flightscopemevo.com](mailto:support@flightscopemevo.com)

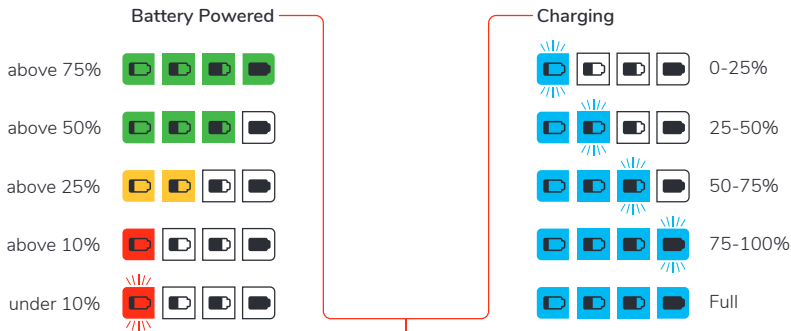


# Battery and charging indicators

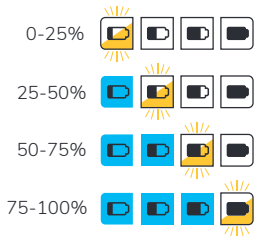


## Charging error

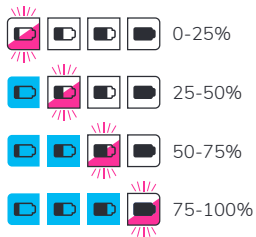
(Battery too hot or cold to charge,  
or battery is not connected properly)






### Externally Powered (Battery not charging)












### External & battery power (External power is not sufficient to power system)



# System indicators

- Connection Status**
- Ready 
  - Connected 
  - Communication Error 

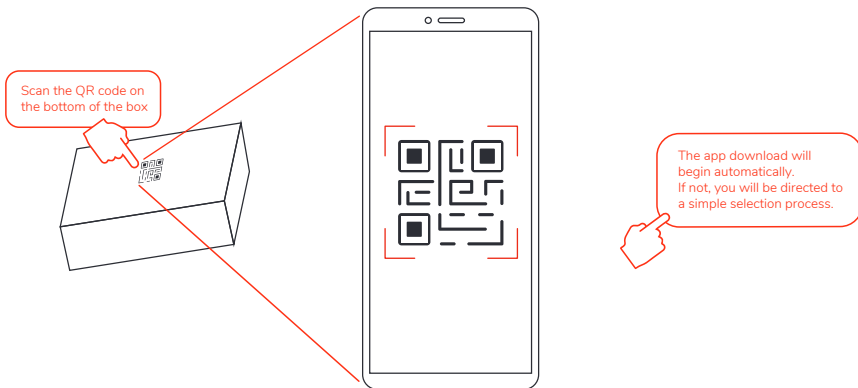
## Radar Status

-  Power on, switching on
-  Processor start up 30-60 seconds
-  Standby mode
-  Armed, ready to measure
-  Triggered
-  Sleep
-  Processor shut down 15-30 seconds
-  Battery empty
-  Firmware error



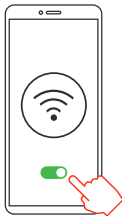
## Get the app

Download and install the FS Golf app.



## Connect to Mevo+ (using QR code)

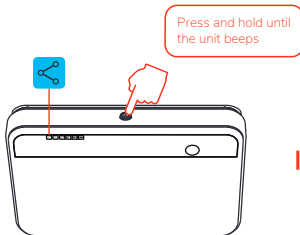
1



Wi-Fi on



2



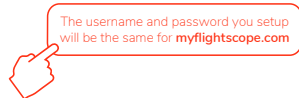
Switch on



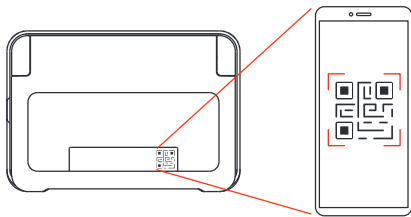
3



Launch FS Golf app



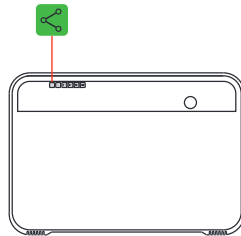
4



In app, scan QR code  
on back of unit



5



Connected

## Connect manually (via Wi-Fi)

If you are unable to connect using the QR code, then you can connect manually in your device settings. Follow these easy steps:

- 1 Make sure your phone's Wi-Fi is turned on.
- 2 Press the on/off button on the unit, the system and battery lights will come on. The connection light will be solid blue while the unit is ready for connection.
- 3 Select Wi-Fi settings on your phone and select the unit with your serial number. The Wi-Fi password is your serial number, for example: M2-123456.
- 4 Launch the app on your phone and proceed.
- 5 The connection light on the the unit will turn to solid green when connection has been established.



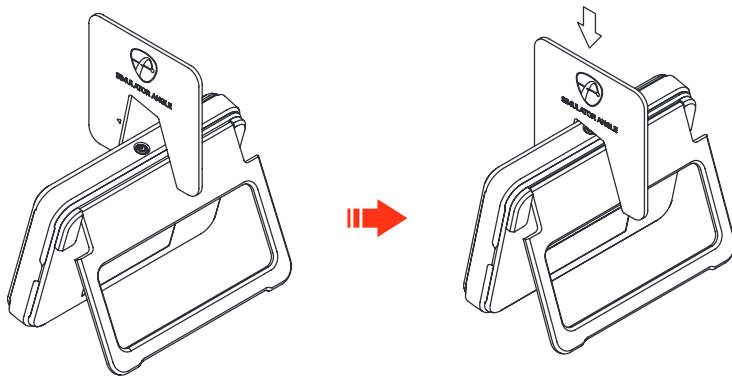
# Kickstand

Open the kickstand and adjust the tilt using the simulator angle.

Using the simulator angle, adjust the kickstand to the correct tilt of  $12^{\circ}$ .  
Between  $11^{\circ}$  and  $13^{\circ}$  is within reasonable tolerance.



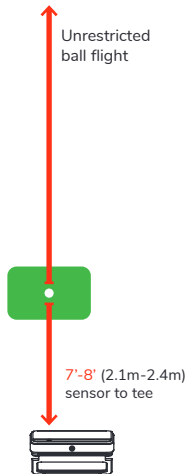
Do not over extend the kickstand  
or force it past it's open position,  
this can cause damage to your unit.



# Setup - Setback

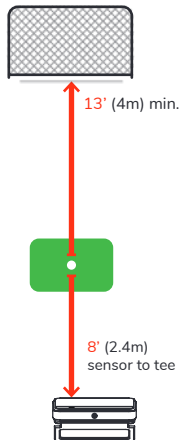
## OUTDOOR

Aluminum stickers NOT required



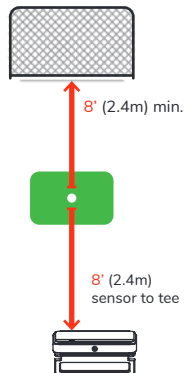
## INDOOR

Aluminum stickers required



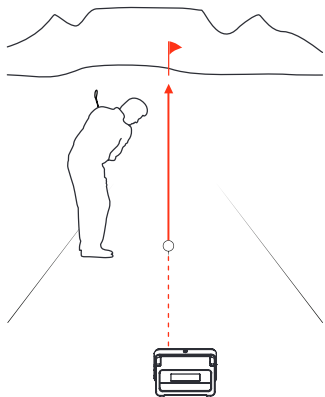
## SHORT INDOOR

Aluminum stickers required

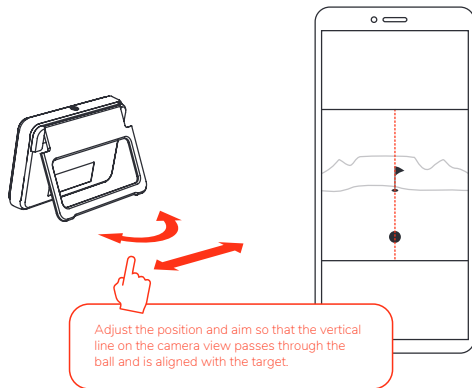


# Aiming

- 1 Place the Mevo+ behind the ball position so that the camera aims along the chosen target line.

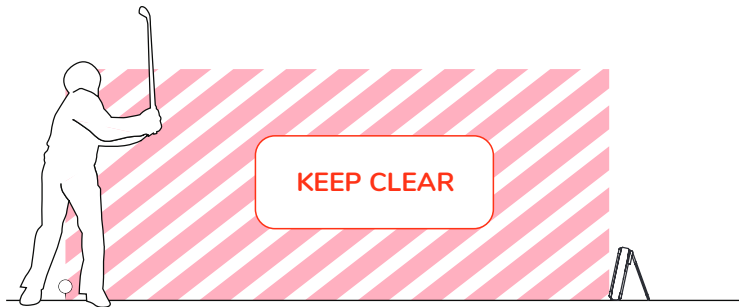


- 2 In the App, follow the instructions using the camera view to align.



# Clearance

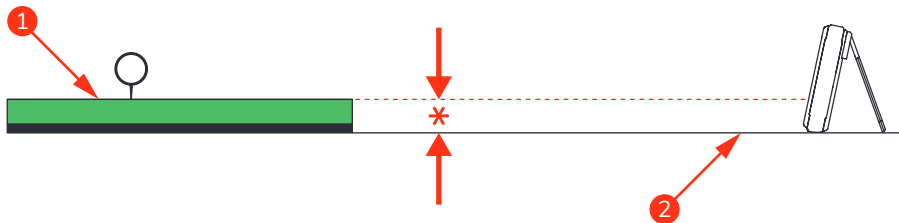
Keep area between Mevo+ and the ball position clear of any objects and people.

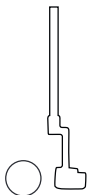


## Tips

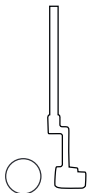
Best practice is to keep the unit on the floor with a level surface between the unit and the mat.

- ① Hitting surface
- ② Ground surface
- \* Maximum difference allowed: 3" (76mm)



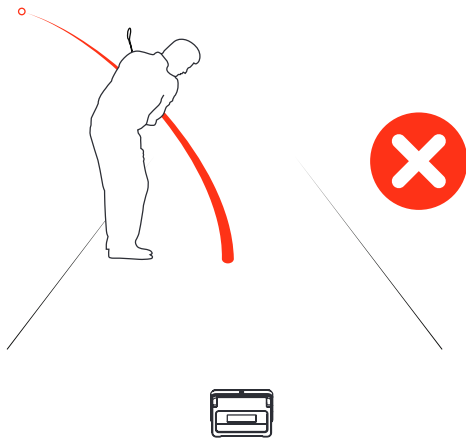


For putting, keep the ball and unit on an even flat surface.



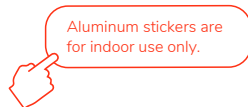
For putting, chipping and hitting never raise the Mevo+ to match the hitting surface, if the surface between the ball and the unit is lower.

Extremely low and wide shots, and shots where the player is between the Mevo+ and the ball, might not register.



## Indoor ball spin

For the best spin accuracy indoors, place an aluminum sticker on the ball.  
Aluminum stickers are not required if using the **Titleist RCT ball**.

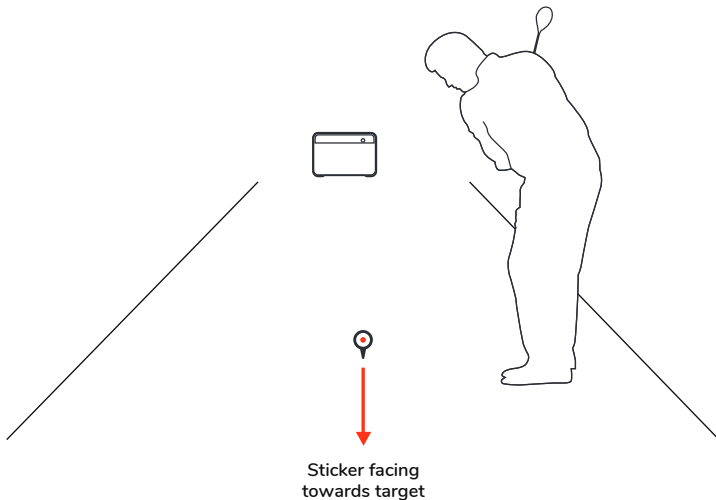


To order additional stickers: go to [www.flightscopemevo.com](http://www.flightscopemevo.com)

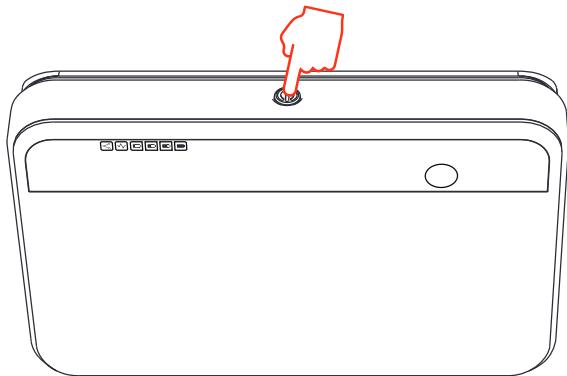


## Aluminum sticker alignment

Place the ball so that the aluminum sticker faces forward, directly away from the Mevo+.



## Switch off



Press and hold to turn off, unit will beep to confirm.  
When all indicators are off, the unit is off.

## Electronic noise

Mevo+ is designed to operate in most environments. However certain appliances and equipment can create noise that can interfere with resulting data capture.

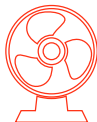
Some common noisy objects are:



aircon



fluorescent  
lights



fans



tv's, laptops and  
desktop computers  
in front of the Mevo+

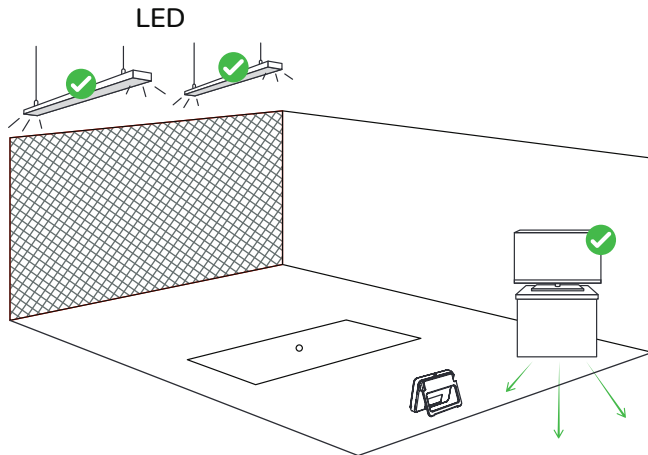


fridges

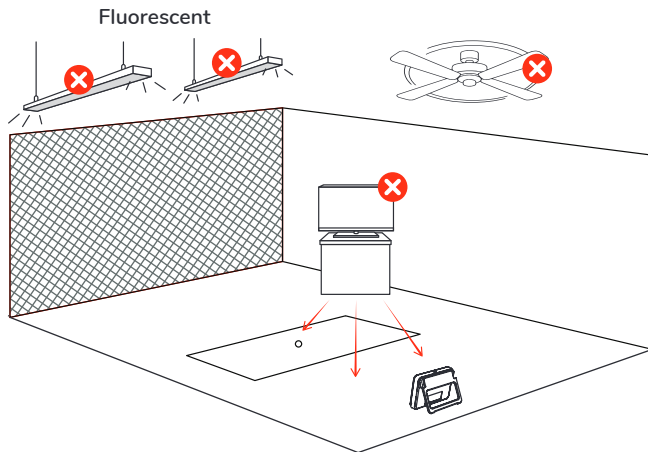


signal  
towers

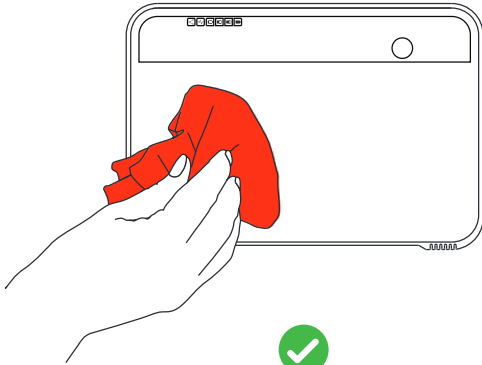
Keep area clear of possible noise interference. Make sure to move noisy electronic devices behind the unit.



Noisy electronic devices in front of the unit may cause poor tracking performance.



## Care



Clean with a damp cloth and light household detergent



Store in the case

\*Case not to scale

# Avoid



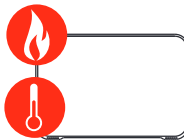
Moisture, including rain



Physical impact



Water immersion



Flames and  
direct heat



Excessive weight loading



Solvent Chemicals

## FAQ's and support



Below are the top 5 frequently asked questions.  
For more FAQ's please refer to [flightscopemevo.com/faq](https://flightscopemevo.com/faq)

1

**Can Mevo+ be used indoors and outdoors?**

Yes. Please check page 13 for indoor space requirements.

2

**Does a reflective sticker need to be used?**

Yes, for indoor use only. See page 18.

3

**How is the video recorded?**

The video is taken with your mobile device in the FS Golf application.

The radar is synchronized with your mobile device to automatically record and clip video of your swing with data overlay.

4

**Can the built in camera be used for video?**

The built in camera is primarily used for patented FlightScope Fusion Tracking and target alignment, and can also do video capturing.

5

**How long is the battery life?**

The battery life is up to 2 hours on a full charge, and up to 1.5 hours in simulator play.





If you need assistance please email our support team at  
[support@flightscopemevo.com](mailto:support@flightscopemevo.com)

# Technical specifications

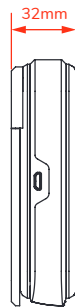
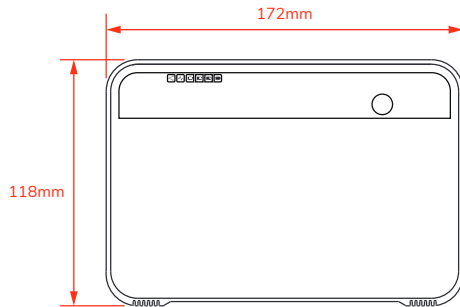
## transceiver

|                      |                                     |
|----------------------|-------------------------------------|
| *operating frequency | 24.08 - 24.16 GHz (nominal)         |
| output power (EIRP)  | 24dBm +/- 3dBm USA 17dBm +/-3dBm EU |

\* Other frequency ranges may apply in certain countries

## electrical, physical, and general

|                       |                                                   |
|-----------------------|---------------------------------------------------|
| operating temperature | 0°C to 40°C / 32°F to 100°F                       |
| dimensions            | 6.8" x 1.2" x 4.6" / 174 x 31 x 118mm (W x D x H) |
| mass                  | 1lb / 465g                                        |
| power supply          | 5V DC +/- 5%; >2 A                                |
| battery               | Rechargeable Li-ion Battery, 3.6V, 3500mAh 12.6Wh |
| camera                | 5MP                                               |
| data interfaces       | USB 2.0                                           |



**FCC Statement:** This equipment has been tested and found to comply with the limits for a Class B digital device, pursuant to Part 15 of the FCC Rules. These limits are designed to provide reasonable protection against harmful interference in a residential installation. This equipment generates, uses and can radiate radio frequency energy and, if not installed and used in accordance with the instructions, may cause harmful interference to radio communications. However, there is no guarantee that interference will not occur in a particular installation. If this equipment does cause harmful interference to radio or television reception, which can be determined by turning the equipment off and on, the user is encouraged to try to correct the interference by one or more of the following measures:

- Reorient or relocate the receiving antenna.
- Increase the separation between the equipment and receiver.
- Connect the equipment into an outlet on a circuit different from that to which the receiver is connected.
- Consult the dealer or an experienced radio/TV technician for help.

Changes or modifications not expressly approved by FlightScope (PTY) could void the user's authority to operate the equipment.

**ISED Statement:** This device contains licence-exempt transmitters(s)/receiver(s) that comply with Innovation, Science and Economic Development Canada's licence-exempt RSS(s).

Operation is subject to the following two conditions:

- (1) This device may not cause interference.
- (2) This device must accept any interference, including interference that may cause undesired operation of the device.

**Declaration IC:** Cet appareil contient des émetteurs/récepteurs exemptés de licence conformes à la norme Innovation, Sciences, et Développement économique Canada.

L'exploitation est autorisée aux deux conditions suivantes:

- (1) L'appareil ne doit pas produire de brouillage.
- (2) L'utilisateur de l'appareil doit accepter tout brouillage radioélectrique subi, même si le brouillage est susceptible d'en compromettre le fonctionnement.

**Japanese caution: for Indoors use only.**

+++++本機器の使用に係る注意事項+++++ 本機器の使用周波数帯（10.5GHz を超え10.55GHz 以下の周波数）では、免許を受けて屋外で利用されている無線局があります。これらとの干渉が懸念される為、本機器の使用は、屋内での使用、即ち住宅、マンション、ビル等の建築物内のみと限定されています。万一、10.5GHz 帯の周波数を使用する移動体検知センサーを屋外で使用した場合には、その使用に支障が生じるばかりでなく、電波法令に違反し罰則の適用を受けることとなりますので、十分注意してください。



**FlightScope<sup>®</sup>**

Performance data you can trust

[flightscopemevo.com](https://flightscopemevo.com)

| [myflightscope.com](https://myflightscope.com)